



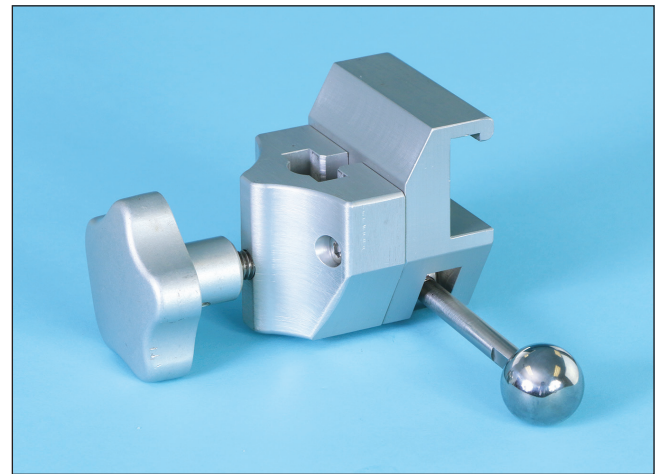
CamLoc Clamp

*Attaches to the rail at any location
over multiple drapes*

The CamLoc Clamp is designed for use in the sterile field and fully autoclavable.

Features

- Accepts accessories with round posts up to $\frac{5}{8}$ "D (1.6cm) and flat posts 1" x $\frac{3}{8}$ " (2.5cm x .95cm)
- Attaches along the side rail, without the need of notches
- 500 lb (227 kg) patient weight capacity



CamLoc Clamp

#800-0271 US

#800-0271-UK UK

#800-0271-EU EU

#800-0271-DEN DEN

Each clamp sold separately.

Phone 888.724.8763 • 781.982.7000 | Fax 781.982.7001 | www.schuremed.com

452 Randolph Street, Abington, MA 02351

©2018 Schuerch Corporation #065-0052 REV 2.01